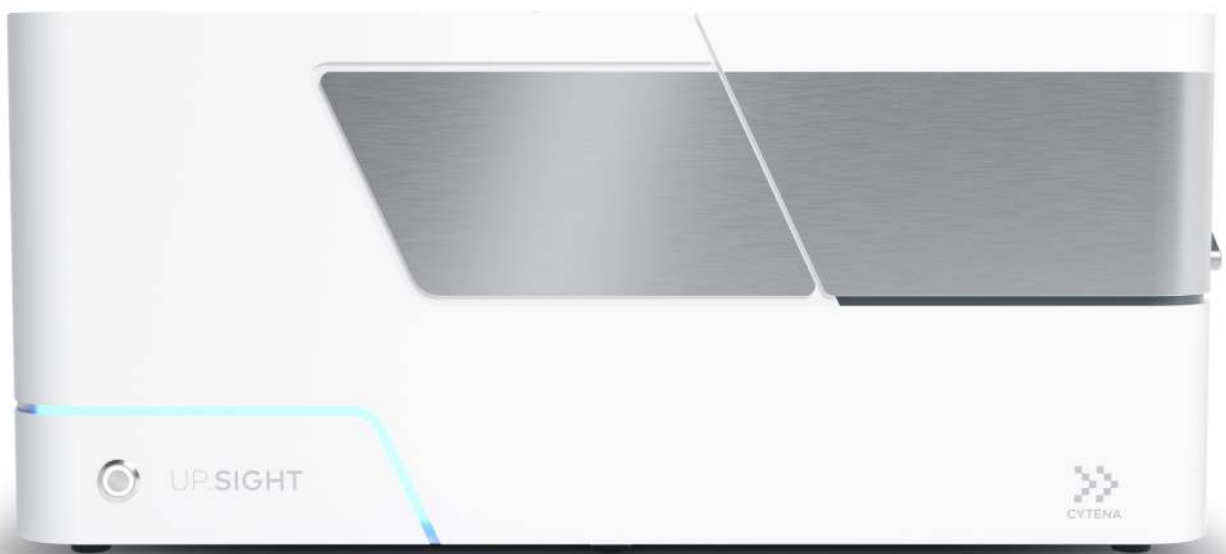


UP.SIGHT™

The ultimate upgrade in cell line development



Elevate your cell line development workflow

The UP.SIGHT streamlines cell line development (CLD) workflows by automating labor-intensive and time-consuming steps. We have combined our patented, highly efficient, fast and gentle single-cell dispensing technology with a superfast, high-quality imaging system that provides a full well image and no need for image stitching. Our all-in-one solution enables nozzle imaging and 3D Full Well Imaging for double assurance of clonality from two independent optical apparatuses, leading to a probability of clonality >99.99%. Researchers can also bypass centrifuging their plates prior to imaging and can be assured that all concerns of hidden, ghost cells in a well have been eliminated.

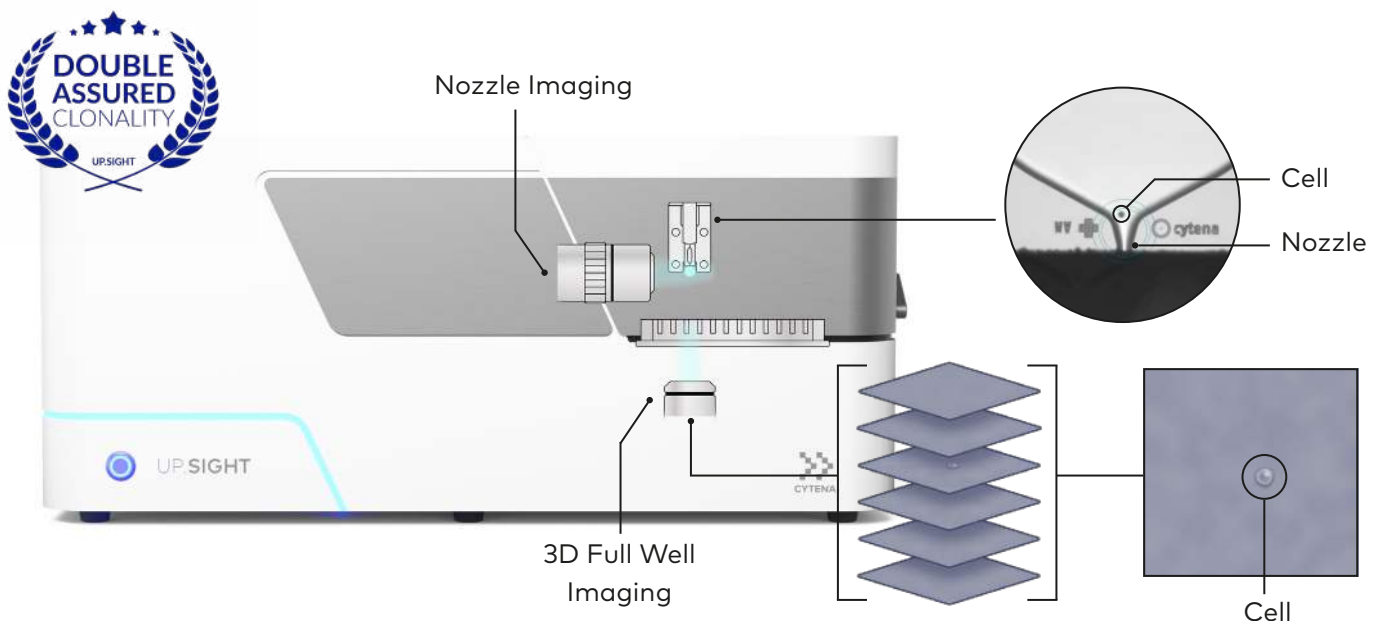
When developing biologics, which account for 8 out of 10 of the best-selling drugs worldwide, it is essential to apply an optimized cell line development workflow with assured clonality to pro-

duce high-performing clonal cell lines for therapeutic protein production. Our product portfolio enables such an optimized CLD workflow where the all-in-one UP.SIGHT is the ultimate upgrade.



Double assurance of clonality

The revolutionary UP.SIGHT offers two independent methods of assuring monoclonality. First, images are taken at the dispensing nozzle to ensure only one cell is placed in each well. If more than one cell or no cells are detected within the nozzle, then that nonclonal droplet is discarded. Second, the single cells are confirmed once more inside the well with 3D Full Well Imaging, a new and innovative method that images the full volume of each well from the point of dispensing, in order to eliminate the concerns of ghost wells or artifacts and edge effects from well plates. Together, these two assurances of clonality result in a probability of clonality >99.99%.



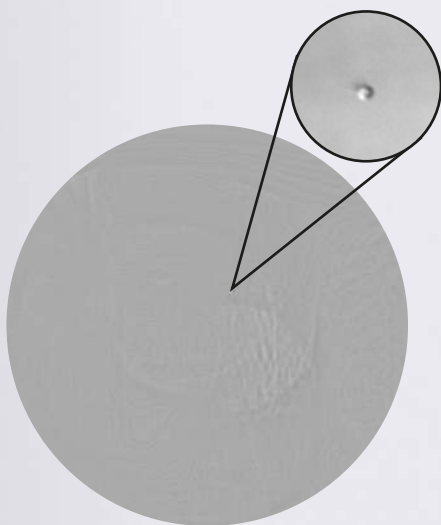
Reducing the risk of cross-contamination

The UP.SIGHT's exclusive EASY.ON cartridge was precisely engineered by microfluidic experts to ensure cell viability with the gentlest handling. The ability to dispose of the cartridges eliminates the risk of cross-contamination between samples. Plus, setting up your experiments has never been easier as the EASY.ON cartridge is magnetically mounted for quick and easy loading.



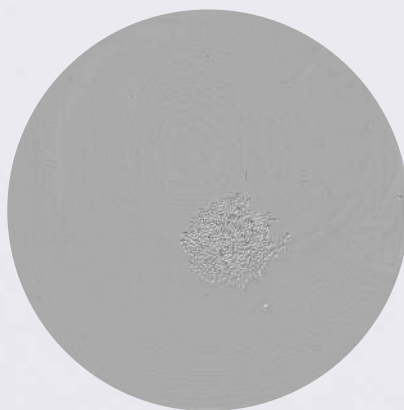
All-in-one single-cell cloning solution, from single cell to colony

With an integrated imager, the UP.SIGHT enables a full single-cell cloning workflow in one instrument. From gentle single-cell isolation to doubly assured clonality to colony tracking from Day 0, the UP.SIGHT does it all.

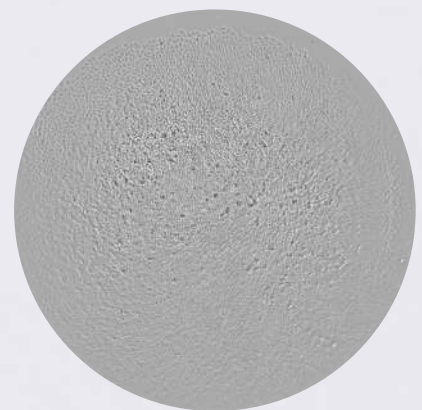


Day 0*

* 3D Full Well Imaging



Day 7**



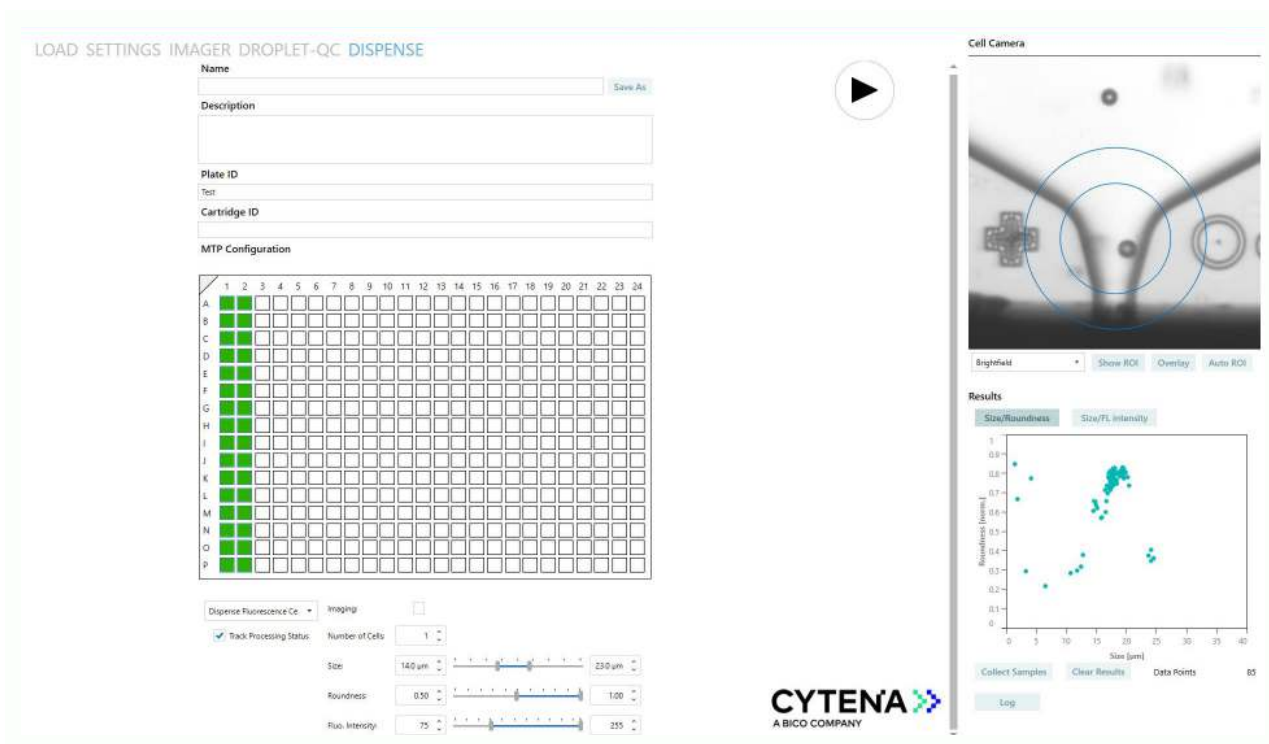
Day 14**

**Traditional bottom-up imaging

Higher yields, greater insights and faster processing

The UP.SIGHT combines our patented single-cell dispensing technology with an industry-leading imaging system for improved single-cell cloning workflow, enabling higher clonal yields and faster processing speeds. The instrument's operating software analyzes cell morphology to isolate single cells according to set parameters such as size, roundness and even fluorescence intensity (if working with fluorescent cells).

The quick and intuitive setup of thresholds for each parameter ensures that only desired cells are dispensed into wells in order to yield more monoclonal colonies. This automation and increased processing speed provide researchers with hundreds of clones isolated and imaged in under 30 minutes with a fraction of the hands-on time typically required.

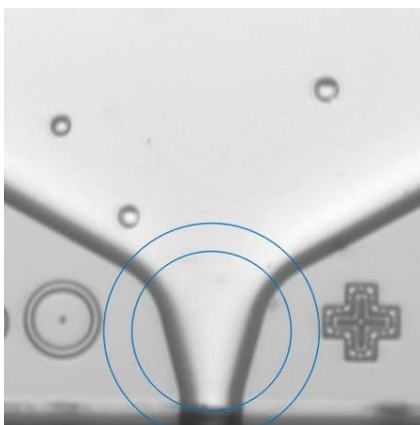




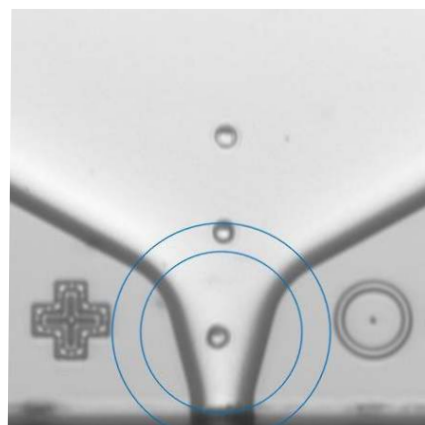
Cell Focusing - Minimizing cell loss

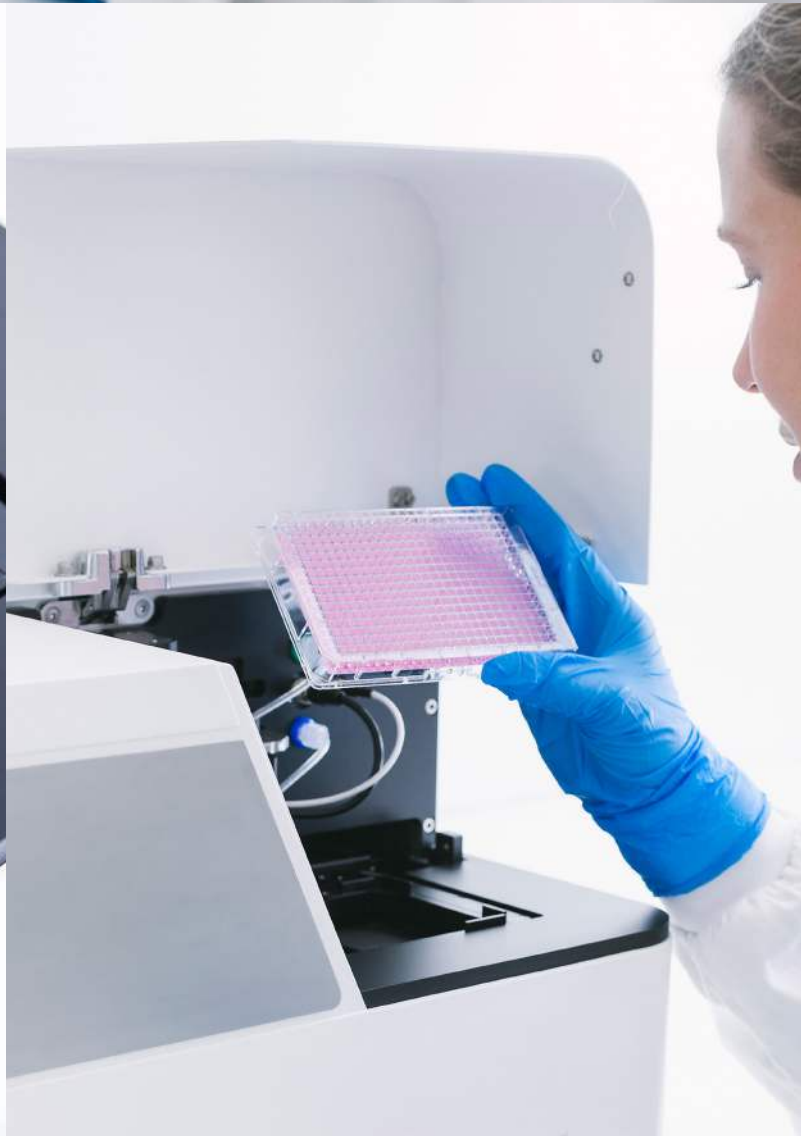
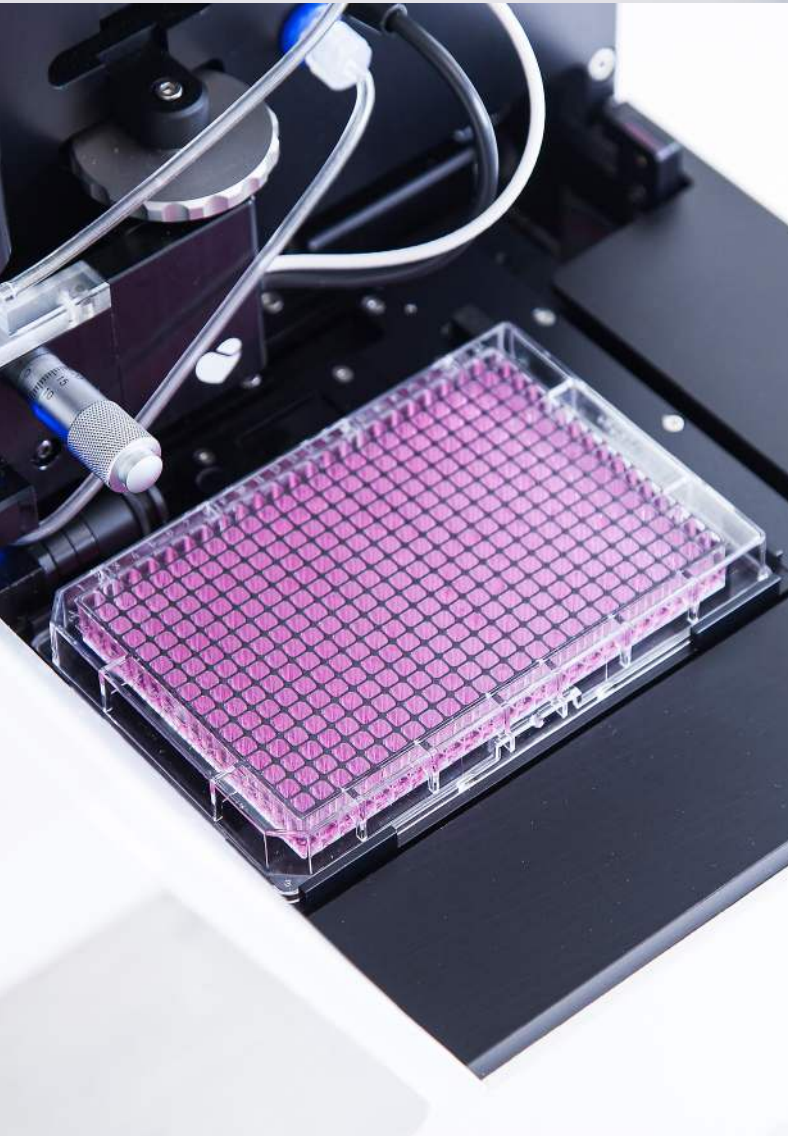
Add an additional layer of optimization with Cell Focusing technology, which gently aligns cells at the center of the dispensing cartridge for superior cell detection. It offers significant improvements when working with rare cell types as this alignment ensures that cells and their morphology are perfectly captured and measured, reducing cell loss and even increasing processing speeds.

*Cell Focusing **Off***



*Cell Focusing **On***





Technical Specifications

Footprint	635 x 400 x 286 mm
Weight	40 kg
Power consumption ca.	200 W
Net voltages	100-240 Vac
Nozzle imaging	File type (JPEG) Camera CMOS, 0.81 MP Magnification 10x Optical resolution 3 µm Excitation wavelength 488 nm Emission wavelength 520 +/- 36 nm
Well imaging	File type (JPEG) Camera CMOS, 13.4 MP Magnification 5x Optical resolution 2.2 µm
Processing times	Single-cell dispensing into 96-well plate: ~2 min Single-cell dispensing into 384-well plate: ~8 min Single-cell dispensing plus 3D Full Well Imaging 384-well plate: ~25 min Well bottom imaging of 96-well plate: ~8 min Well bottom imaging of 384-well plate: ~8 min
Embedded computer (Win 10 x 64 Prof.) Automation-ready incl. API and DLLs Compatible with standard biosafety cabinets class 2	
Certified CE, CB, UL (TÜV), RoHS	



We create the future of health.



CYTENA, A BICO COMPANY

CYTENA is a leading provider of high-precision instruments for isolating, dispensing, imaging, analyzing and handling biological cells. The company continues to build on the success of the single-cell dispensing technology it patented as a spin-off from the University of Freiburg, Germany, in 2014. Today, as part of BICO, the world's leading bio convergence company, CYTENA's award-winning devices are still manufactured in Germany and used at prestigious academic and pharmaceutical labs around the world to automate workflows in numerous application areas, including stable cell line development, single-cell omics, high-throughput screening and drug discovery. CYTENA's breakthrough innovations for the lab combine advanced automation, state-of-the-art software engineering and the latest insights in cell biology to maximize efficiencies in the life sciences and create the future of health. Learn more at www.cytena.com